


2017 CRICKET RANGE

WHERE TRADITION MEETS INNOVATION



DAVID WARNER  
AUSTRALIA  
THE DESTROYER

KUSAL MENDIS  
SRI LANKA  
THE NEXT GENERATION

KANE WILLIAMSON  
NEW ZEALAND  
THE STYLIST

KRAIGG BRAITHWAITE  
WEST INDIES  
THE WALL

THE WORLD'S ELITE TRUST GRAY-NICOLLS TO DELIVER. IN 2015 OUR  
AMBASSADORS PROVIDED 27 REASONS WHY YOU SHOULD DO THE SAME.  
GRAY-NICOLLS EMPOWERS...

# GRAY-NICOLLS EMPOWERS

NO OTHER BRAND SCORED MORE INTERNATIONAL CENTURIES THAN GRAY-NICOLLS IN 2015.

Our portfolio of ambassadors have ensured global dominance in all formats of the game. Our player presence reached a peak in December with six Gray-Nicolls ambassadors in England's Test Team against South Africa. New Zealand Captain Kane Williamson averaged 90 in Test Match cricket that included five centuries. England Captain Alastair Cook was Gray-Nicolls leading run scorer with a Test Match tally of 1364 with David Warner just behind with 1317 at an incredible strike rate of 81. Usman Khawaja, Shaun Marsh and Kraigg Brathwaite also shone on the International stage with match winning innings.

Williamson's incredible form continued in the shorter formats with 1376 runs scored including three ODI 100's to go with his five in Test Matches. Alex Hales & James Taylor both registered maiden ODI centuries for England. JP Duminy continued to be a mainstay in the South African middle order with a World Cup 115 against Zimbabwe. William Porterfield and Ed Joyce both stood out at the World Cup for Ireland with head to toe ODI centuries. Warner's Kaboom also set the game alight with a blistering 178, to set Australia up for another World Cup victory.

Exciting times are ahead with Alex Hales, Sam Billingsall powering England forward in each format. Gray-Nicolls will continue to outscore the opposition.

## GRAY-NICOLLS EMPOWERS...

### CONTENTS

5	CRICKET BATS	29	HELMETS	40	CLOTHING
13	BAT CARE	30	LUGGAGE		
14	BATTING GLOVES	33	CRICKET BALLS		
20	LEGGUARDS	34	ACCESSORIES		
25	WICKET KEEPING	36	STUMPS		
28	BODY ARMOUR	38	FOOTWEAR		


ALASTAIR COOK  
ENGLAND  
THE RECORD BREAKER

# WELCOME TO THE 2017 GRAY-NICOLLS COLLECTION.

WE PRIDE OURSELVES ON OUR ASSOCIATION WITH THE GAME'S GREATEST PLAYERS. OUR LINKS EXTEND BEYOND THE TEST MATCH ARENA AND WE ARE PROUD TO SHOWCASE OUR GROWING NUMBER OF GOVERNING BODY AND COUNTY BOARD PARTNERS. IT'S TESTIMONY TO THE QUALITY AND BREADTH OF OUR PRODUCT CATEGORIES THAT WE HAVE BEEN CHOSEN TO OFFER EQUIPMENT AND CLOTHING SUPPORT.





A man with a beard, wearing a blue zip-up shirt, is focused on working on a cricket bat. He is using a tool to shape the wood, with shavings visible. The background is a workshop with various tools and equipment. A solid red rectangle is in the top right corner.

OUR PRODUCTS ARE TRUSTED BY THE  
WORLD FINEST CRICKETERS AND THEY ARE  
INSTRUMENTAL IN THE DEVELOPMENT PROCESS  
AND EVOLUTION OF GRAY-NICOLLS.

THE DEMANDS SET BY AMBASSADORS ARE  
MET BY OUR PRODUCT TEAM AND MASTER  
CRAFTSMEN WHO SHARE THEIR PASSION FOR  
THE GAME TO INSPIRE GENERATIONS TO COME.  
AN ICONIC MODEL IS BACK AND WILL PROVIDE  
CLASSICAL POWER WHILE NEW INNOVATIONS  
GENERATE SPEED AT THE CREASE.

OUR WICKET-KEEPING RANGE, HELMETS AND  
FOOTWEAR HAVE ALL GAINED FANTASTIC  
INTERNATIONAL EXPOSURE OVER THE PAST  
12 MONTHS.

OUR CLOTHING IS SHOWCASED BY THREE FIRST  
CLASS COUNTIES AND OFFERS PROFESSIONAL  
QUALITY FOR ANY STANDARD.

OUR LUGGAGE COLLECTION AND CRICKET BALLS  
HAVE ALL UNDERGONE MAJOR IMPROVEMENTS  
AND ENSURE ALL OUR PRODUCT CATEGORIES  
EMPOWER AND INSPIRE CRICKETERS TO REALISE  
THEIR POTENTIAL.

Unique to the industry, Gray-Nicolls grow only the finest English willow for the production of their cricket bats. Salix Caerulea or Alba Var varieties are grown and harvested by the Company in a willow replenishment programme pioneered over 100 years ago.

The Players bat has been created for a batsman serious about his game.  
A beautiful top class bat suited for all standards of player that ensure a real presence and unrivalled confidence at the crease.

# PLAYERS



Mike Atherton  
England Captain 1993 - 2001

## SENIOR BAT OPTIONS

PLAYERS		
WEIGHTS	2lb 8oz - 2lb 12oz	SH

## JUNIOR BAT OPTIONS

PLAYERS		
WEIGHTS	2lb 3oz - 2lb 7oz	H, 6, 5

All models are sanded and buffed as part of the preparation process.



### HANDLE

Semi-oval handle for comfort and complete control.

### GRIP

Classic Chevron provides the complete retro look

### PROFILE

Concave sculpting to give professional pick up and balance.

### STRIKE ZONE

Mid-blade, ideally suited for both front and back foot play.

# PRESTIGE

With classic cosmetics and profile, Prestige has been created for a batsman serious about his game. A bat graded for First Class performance will ensure a real presence and unrivalled confidence at the crease.



Nasser Hussain  
England Captain 1999 - 2003

## SENIOR BAT OPTIONS

5 STAR		
WEIGHTS	2lb 8oz - 2lb 12oz	SH

All models are sanded and buffed as part of the preparation process.



The Select have been created for a batsman serious about his game.  
A beautiful bat, suited for all standards of player that ensure a real presence and unrivalled confidence at the crease.

# SELECT



## HANDLE

Semi-oval handle for comfort and complete control.

## GRIP

Classic Chevron provides the complete retro look

## PROFILE

Concave sculpting to give professional pick up and balance.

## STRIKE ZONE

Mid-blade, ideally suited for both front and back foot play.

## SH ONLY

All models are sanded and buffed as part of the preparation process.



# PREDATOR 3

THE RETURN OF A GRAY-NICOLLS ICON. A FULL BLADE PROFILE DEVELOPED IN CONJUNCTION WITH OUR BRAND AMBASSADORS THAT IS CLASSICAL YET UNCOMPROMISING IN POWER. PREDATOR 3, IS SURE TO SET THE STANDARD ONCE AGAIN ON THE WORLD'S STAGE.



## SENIOR BAT OPTIONS SH ONLY

	LIMITED EDITION	PLAYERS	5 STAR	DESTROYER (clear back with fibretec face)
WEIGHTS	2lb 8oz - 2lb 12oz	2lb 8oz - 2lb 12oz	2lb 8oz - 2lb 12oz	2lb 8oz - 2lb 12oz

## JUNIOR BAT OPTIONS H, 6, 5

	500 LITE	BLADE (clear back with edge tape applied)
WEIGHTS	2lb 1oz - 2lb 6oz	2lb 8oz - 2lb 12oz

All models are sanded and buffed as part of the preparation process.

THE FIFTH EDITION OF THE POWERBOW ENCAPSULATES ORIGINAL FEATURES TO CREATE A NEW BENCHMARK FOR BAT MAKING. A LONG, EXAGGERATED BOW ENHANCED BY AN IMPOSING LOW, FULL-BLADE PROFILE IS THE PERFECT COMBINATION FOR ANY PLAYER LOOKING FOR THE ULTIMATE INNINGS.

# POWERBOW 5



## SENIOR BAT OPTIONS SH ONLY

	LIMITED EDITION	PLAYERS	5 STAR
WEIGHTS	2lb 8oz - 2lb 12oz	2lb 8oz - 2lb 12oz	2lb 8oz - 2lb 12oz

## JUNIOR BAT OPTIONS H, 6, 5 (clear back / face with proface cover)

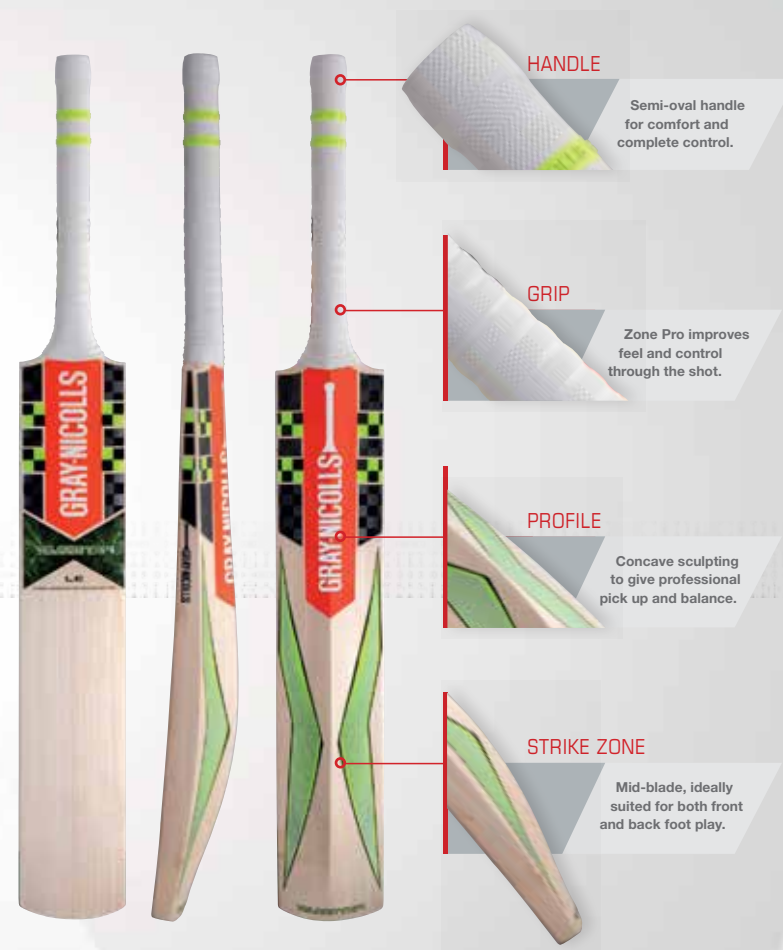
	500 LITE
WEIGHTS	2lb 3oz - 2lb 6oz

All models are sanded and buffed as part of the preparation process.

\* Endorsed by Sam Billings - England

# VELOCITY XP1

IN A TIME WHERE POWER IS KEY, VELOCITY PROVIDES IT TO YOU IN ABUNDANCE. BEAUTIFULLY CRAFTED AND BALANCED, NEVER SACRIFICING THE PERFECT PICK UP AND VISUALLY INTIMIDATING TO PROVIDE ANY PLAYER CONFIDENCE TO TAKE ON THE CHALLENGE.



## SENIOR BAT OPTIONS SH ONLY

	LIMITED EDITION	PLAYERS	5 STAR	500 LITE
WEIGHTS	2lb 7oz - 2lb 10oz	2lb 7oz - 2lb 12oz	2lb 7oz - 2lb 12oz	2lb 6oz - 2lb 8oz

## JUNIOR BAT OPTIONS (clear back / face with proface cover)

	500 LITE	ACADEMY
WEIGHTS	2lb 3oz - 2lb 6oz	2lb 1oz - 2lb 4oz
SIZES	H,6,5	6, 5, 4, 3

## KASHMIR WILLOW (clear back with edge tape applied)

BLAZE
SIZES 6, 5, 4, 3

All models are sanded and buffed as part of the preparation process.

DESIGNED TO TAKE BATTING TO A NEW DIMENSION. AN UNPRECEDENTED EDGE PROFILE AND SCULPTED LOW-BLADE HITTING ZONE WILL MAKE SUPERNOVA THE TALK OF ANY DRESSING ROOM. POWER, STYLE AND ABSOLUTE QUALITY IS IN ABUNDANCE FROM THE GAME'S BEST BAT MAKERS.

# SUPERNOVA



## HANDLE

Semi-oval handle for comfort and complete control.

## GRIP

Zone Pro improves feel and control through the shot.

## PROFILE

Contoured for professional pick up, balance and power.

## STRIKE ZONE

Mid/low blade zone, ideally suited for the front foot player.

## SENIOR BAT OPTIONS SH ONLY

	LIMITED EDITION	PLAYERS	5 STAR
WEIGHTS	2lb 8oz - 2lb 12oz	2lb 8oz - 2lb 12oz	2lb 8oz - 2lb 12oz

## JUNIOR BAT OPTIONS H, 6, 5 (clear back / face with proface cover)

	500 LITE
WEIGHTS	2lb 1oz - 2lb 16oz

All models are sanded and buffed as part of the preparation process.



# KABOOM

DAVID WARNER HAS ESTABLISHED HIMSELF AS ONE OF THE GAME'S MOST EXPLOSIVE BATSMEN. A DANGEROUSLY LARGE PROFILE AND MASSIVE EDGES, GIVES ANY PLAYER THE CONFIDENCE TO CLEAR THE ROPES WITH KABOOM.



## HANDLE

Semi Oval handle for comfort and complete control.

## GRIP

Classic chevron provides the complete retro look.

## PROFILE

Concave sculpting to give professional pick up and balance.

## STRIKE ZONE

Low-blade, ideally suited for front foot play.

SH ONLY

All models are sanded and buffed as part of the preparation process.



## | BAT CONDITIONING KIT

### Features:

- Kit comprising: 1 Grip, 1 Bat Cone/Mallet, 1 bottle of linseed oil and a rag.



## | BAT REPAIR KIT

### Features:

- Kit comprising: 1 Grip, 2 protectoes, 1 tube of glue, 1 sheet sandpaper, 1 bottle of linseed oil and a rag.



## | BAT CONE / Mallet

### Features:

- Knock your bat in and change your grip with the all in one bat cone/mallet.



## | BAT Mallet

### Features:

- Used to prepare face and edges on a new bat



## | GRIP CONE

### Features:

- For applying rubber grips.



## | PROTECTOE

### Features:

- Kit comprising: 2 protectoes, 1 tube of glue, 1 sheet sandpaper,



## | FIBRETEC ROLL

### Features:

- (10m roll of 25mm wide fibreglass tape)



## | FIBRETEC

### Features:

- Test match quality protection
- Self Adhesive Unidirectional Facing



## | EXTRATEC

### Features:

- Helps reduce surface & edge cracks
- Self Adhesive Clear Pu Facing



## | GRIPS

### Features:

- Zone Pro Grips (Various Colours)
- Zone Grip (Various Colours)
- Half Moon Grips (Various Colours)
- Chevron Grips (Various Colours)



## | BAT OIL SPRAY

### Features:

- 105ML - COMES IN BOXES OF 20

# GLOVES

YOUR HANDS ARE THE CONNECTION BETWEEN YOU AND YOUR TRUSTED BLADE.  
THE GRAY-NICOLLS GLOVE COLLECTION PROVIDES STYLE, CONFIDENCE AND COMPLETE  
CONTROL AT THE CREASE. FEEL EVERY BOUNDARY.  
GRAY-NICOLLS EMPOWERS...







## LEGEND GLOVES

Size Options: M  
Playing Level: Test

### Features:

- Pittards premium leather palm provides exceptional feel, grip, durability and moisture management.
- Interlocking "V" design for flexibility and freedom of movement.
- Ultra-light high density foam for impact shock absorption with fibre-shield inserts and soft fill provide a high level of impact resistance.
- Additional impact bars on side and thumb combined with Gel-Zone technology.



## PRESTIGE GLOVES

Size Options: M  
Playing Level: Test

### Features:

- Traditional pre-curved fingers with soft-fill lining providing maximum comfort.
- Fibre-shield overlay on lead two fingers.
- Gel-Tech finger and thumb guards with sponge underlay for extra protection.
- Airflow system for ventilation and dual sided sweatband for moisture absorption and player comfort.
- Premium supple leather palm retains grip and feel.



# PREDATOR 3



## PREDATOR 3 1500 GLOVES

Size Options: M  
Playing Level: Test

Protection: ★★★★★  
Lightness: ★★★★★  
Comfort: ★★★★★

### Features:

- 32 Section pre curved X-Lite High Density foam sections for protection, flexibility and comfort
- Fibershield finger casing on first two fingers with interlocking sections for ultimate protection
- 3 Sectioned interlocking thumb design
- 3 Sectioned side impact bar with GEL ZONE technology
- Premium Pittards leather palm for ultimate grip and feel and moisture management
- 2 Inch double sided sweatband for moisture absorption and airflow gusset for ventilation.



## PREDATOR 3 1000 GLOVES

Size Options: M  
Playing Level: County / Test

Protection: ★★★★★  
Lightness: ★★★★★  
Comfort: ★★★★★

### Features:

- 32 Section pre curved X-Lite High Density foam sections for protection, flexibility and comfort.
- Fibershield finger casing on first two fingers.
- 3 Sectioned interlocking thumb design.
- 3 Sectioned side impact bar with C.P.Z. technology.
- Layer of soft fill for optimum comfort and protection.
- Premium grade A sheep ultra thin leather palm for improved grip and feel.
- 2 Inch double sided sweatband for moisture absorption and airflow gusset for ventilation.



## PREDATOR 3 600 GLOVES

Size Options: Y, M  
Playing Level: Club / County

Protection: ★★★★★  
Lightness: ★★★★★  
Comfort: ★★★★★

### Features:

- 24 Section pre curved X-Lite High Density foam sections for protection, flexibility and comfort.
- 3 Sectioned side impact bar with C.P.Z. technology.
- Layer of soft fill for optimum comfort and protection.
- Premium supple sheep leather palm for improved grip and feel.
- 2 Inch double sided sweatband for moisture absorption and airflow gusset for ventilation.



## PREDATOR 3 250 GLOVES

Size Options: J, Y, M  
Playing Level: Club / School

Protection: ★★★★★  
Lightness: ★★★★★  
Comfort: ★★★★★

### Features:

- 22 Section pre curved foam and cotton fill sections for protection, flexibility and comfort.
- Layer of soft fill for optimum comfort and protection.
- Calf leather palm for improved grip and feel
- 2 Inch double sided sweatband for moisture absorption and airflow gusset for ventilation.



## VELOCITY XP1 TEST GLOVES

**Size Options:** M  
**Playing Level:** Test

**Protection:** ★★★★★  
**Lightness:** ★★★★★  
**Comfort:** ★★★★★

### Features:

- 39 Pre curved interlocking multi section split finger glove provides the ultimate in flexibility, protection and fit.
- Finger fibre shield overlay for additional protection on all fingers with additional shield inserts to provide 4 layers of protection
- 3 Section interlocking thumb design for superior comfort and flexibility with side impact bar.
- Premium Pittards leather palm for ultimate grip and feel and moisture management
- 3 Sectioned side impact bar with GEL ZONE technology – plus additional outside of hand impact bar.



## VELOCITY XP1 800 GLOVES

**Size Options:** M  
**Playing Level:** County

**Protection:** ★★★★★  
**Lightness:** ★★★★★  
**Comfort:** ★★★★★

### Features:

- 29 Pre curved multi section split finger glove provides flexibility with first 2 finger fibre shield overlay for additional protection.
- 3 Section interlocking thumb design for superior comfort and flexibility.
- X-Lite HDF foam reduce the weight of the glove by 20% compared to standard foam.
- Grade A Sheep leather palm for improved grip and feel, softfill lining for protection and comfort.
- 3 Sectioned side impact bar with C.P.Z. technology.



## VELOCITY XP1 500 GLOVES

**Size Options:** J, Y, M  
**Playing Level:** Club

**Protection:** ★★★★★  
**Lightness:** ★★★★★  
**Comfort:** ★★★★★

### Features:

- Pre curved multi section split finger glove provides flexibility with first finger fibre shield overlay for additional protection.
- Grade A Sheep leather palm for improved grip and feel, softfill lining for protection and comfort with split thumb design to improve fit.
- High density foam combined with traditional fill padding provide a dual layer of impact protection.



## VELOCITY XP1 100 GLOVES

**Size Options:** SJ, J, Y, M  
**Playing Level:** Academy

**Protection:** ★★★★★  
**Lightness:** ★★★★★  
**Comfort:** ★★★★★

### Features:

- 14 Section pre curved foam and cotton fill sections for protection, flexibility and comfort .
- Calf leather palm for improved grip and feel
- 2 Inch double sided sweatband for moisture absorption and airflow gusset for ventilation

# SUPERNOVA

# POWERBOW 5

# ACADEMY



## SUPERNOVA 900 GLOVES

Size Options: Y, M  
Playing Level: First Class

### Features:

- Pre-curved high density finger design with fibre shield overlay for additional impact resistance.
- Full grain leather palm with perforated thumb designs for ventilation.
- Soft fill lining for comfort with split thumb design to improve fit.
- High density foam combined with traditional padding provide a dual layer of impact resistance.



## POWERBOW 5 1250 GLOVES

Size Options: M  
Playing Level: Test

### Features:

- Combination design – traditional pre-curved fingers on first two fingers with split section interlocking design per hand. High density foam for ultimate flex and movement, combined with fibre shield casing on all key finger positions.
- 3 Section interlocking thumb design
- Impact absorbing XRD foam, side impact bar and additional soft fill for comfort.
- Full grain leather palm for classical superior grip and moisture management.



## ACADEMY GLOVES

Size Options: SJ, J, Y, M  
Playing Level: Academy

### Features:

- Double sided sweat band.
- Fibre insert in first finger.
- Pre-curved fingers for improved fit with soft-fill padding.
- Leather palm with split thumb design.



# INNERS



## INNER PRO FULL BATTING

Size Options: J, Y, M

- Premium soft cotton gives exceptional fit.
- Open cuff design for casual fit.



## INNER PRO FINGERLESS BATTING

Size Options: J, Y, M

- Premium soft cotton gives exceptional fit.
- Open cuff design for casual fit.



ALEX HALES  
ENGLAND



ALASTAIR COOK  
ENGLAND



## LEGGUARDS

# GRAY-NICOLLS EMPOWER

GRAY-NICOLLS PAD COLLECTION, FASTER, LIGHTER, QUICKER THAN THE BEST COVER FIELDERS. GIVE THEM ANOTHER THING TO WORRY ABOUT OTHER THAN YOUR BOOMING DRIVES.

GRAY-NICOLLS EMPOWERS...



# CLASSIC COLLECTION

# PREDATOR 3



## SELECT LEGGUARDS

Size Options: S, M  
Playing Level: Club

### Features:

- Traditional cane fronted pad with padded side wing for comfort.
- 3 Section padded knee roll, vertical foam shin bolster and padded top hat for lightweight performance.
- Padded instep with durable fabric covering.



## PREDATOR 3 1000 LEGGUARDS

Size Options: M  
Playing Level: County / Test

### Features:

- 8 Lightweight 320mm high density foam bolsters with second density backing provide high level lightweight protection.
- X-Lite HDF bolsters are 20% lighter than previous EVA.
- Smart Impact absorbing Gel in knee plus 25mm thick wings provides extra protection.
- Traditional knee roll design complements the fit and shape of the pad padded 2.5 inch calf and ankle straps.

# VELOCITY XP1



## VELOCITY XP1 TEST LEGGUARDS

**Size Options:** M  
**Playing Level:** Test

### Features:

- 8 Lightweight cane rods with high density foam backing strips and full length internal HDF pre curved shin section provide maximum level dual density lightweight protection.
- Gel Zone in knee with additional protective inserts in bolsters and 30mm thick wings provides extra protection.
- Leg hugging design with "butterfly" designed padded straps and padded buckles plus additional ankle foam for ultimate comfort and fit.



## VELOCITY XP1 800 LEGGUARDS

**Size Options:** M  
**Playing Level:** County / Test

### Features:

- Lightweight 20mm high density foam and cane construction for ultimate shock absorption.
- Pre Moulded knee cup with additional protective inserts in bolsters and 30mm thick wings provides extra protection.
- 2 inch padded straps and padded buckle for stability and superior fit and comfort.



## VELOCITY XP1 550 LEGGUARDS

**Size Options:** Y, M  
**Playing Level:** Club / School

### Features:

- Lightweight 15mm high density foam and cane construction with 20mm padded side wing for excellent shock absorption.
- Reinforced internal pre moulded knee cap for fit and protection.
- 3 piece inner shin bolster for comfort and superior protection.



## VELOCITY XP1 100 LEGGUARDS (AMBI)

**Size Options:** J / Y / M  
**Playing Level:** School

### Features:

- Dual wing suitable for right or left hand players, closer fitting cane front provides significant impact protection.
- Lightweight foam bolsters with padded top hat for additional protection.
- Ripstop covered Instep – Highly durable material.





## SUPERNOVA TEST LEGGUARDS

**Size Options:** M  
**Playing Level:** Test

### Features:

- Pre-moulded lightweight high-density foam bolsters reinforced with cane rods and full length internal HDF for our best resistance.
- New moulded knee roll design provides improved fit combined with 3 section internal knee system with Gel Zone.
- Leg hugging design with 'butterfly' padded straps and padded buckles, plus additional foam around the ankle for comfort and fit.
- Innovative new 1 piece pre-curved high density foam shin bolster provides a superior fit.



## SUPERNOVA 900 LEGGUARDS

**Size Options:** M  
**Playing Level:** First Class

### Features:

- High density foam side bolsters provide high level of performance at a fraction of the weight.
- New moulded knee design provides improved fit combined with 3 section internal knee system with Gel Zone.
- Leg-hugging design with 'butterfly' padded straps and padded buckles, plus additional foam around the ankle for comfort.
- Innovative new 1 piece pre-curved high density foam shin bolster provides superior fit.



# POWERBOW 5



## POWERBOW 5 1250 LEGGUARDS

Size Options: M  
Playing Level: Test

### Features:

- Lightweight HDF strips combined with ultra lightweight cane rods provide traditional look.
- C.P.Z. (Cellular Protective Zone) Gel insert with reinforced internal pre-moulded knee cap for comfort.
- Leg hugging design with 'butterfly' padded straps and padded buckles, plus additional ankle foam for comfort, performance and fit.

# ACADEMY



## ACADEMY LEGGUARDS

Size Options: SJ, J, Y, M  
Playing Level: Entry Level

### Features:

- Ergonomically designed lightweight foam shin bolster.
- Padded top hat provides additional comfort.
- Traditional vertical sectioned pad.
- Ambidextrous design.

# WICKET KEEPING

ITS ALL ABOUT TAKING THE HALF CHANCE. WHATEVER YOUR STAGE, DON'T MISS THE OPPORTUNITY TO SET THE STANDARD WITH GRAY-NICOLLS. 15 FIRST CLASS WICKET KEEPERS CAN'T BE WRONG.

GRAY-NICOLLS EMPOWERS...



SAM BILLINGS  
ENGLAND

PETER NEVILL  
AUSTRALIA



GARETH RODERICK  
GLOUCESTERSHIRE



BEN FOAKES  
ENGLAND LIONS



## OMEGA XRD WK GLOVES

**Size Options:** M, L  
**Playing Level:** Test



### Features

- Revolutionary palm cushioning, a combination of XRD padding and Powerflex grip design
- Unrivalled flexibility with an ultra-thin palm which doesn't compromise on comfort
- Specifically designed backing material, light and flexible without compromise on durability.
- Leather Pro-Palm lining for premium comfort.
- Innovative new thimble design significantly reducing the weight of the glove.
- Ergonomically designed Tri web for maximum support to the hand.
- Strategically positioned mesh panels allow airflow and ventilation.
- Hard wearing PU inserts on finger tips for maximum durability.



## LEGEND WK GLOVES

**Size Options:** M, L  
**Playing Level:** Test

### Features

- Hypertac grip technology. The thinnest most supple rubber grip pattern to ensure outstanding performance.
- Specifically designed backing material, extremely lightweight and flexible without compromise to durability.
- Leather Pro-Palm lining for premium comfort.
- Innovative thimble design significantly reduces the weight of the glove.
- Ergonomically designed Tri-Web provides perfect support to the hand.
- Strategically positioned mesh panels allow airflow and ventilation.
- Hard wearing anti-scuff PU inserts on finger tips.
- Longer cuff design, the choice of professionals.



## PRESTIGE WK GLOVES

**Size Options:** Y, M, L  
**Playing Level:** Test

### FEATURES

- Octopus Grip Technology for perfect catching pattern with outstanding durability.
- Specifically designed backing material, extremely lightweight and flexible without compromise on durability.
- Cotton palm and cuff Lining.
- Ergonomically designed Tri Web for additional support to the hand.
- Strategically positioned mesh panels allow airflow and ventilation.
- Hard wearing anti scuff PU inserts on finger tips.
- Classic Rubber Thimbles with diffuser foam inserts provide armour for the finger tips.



## POWERBOW 500 GLOVES

**Size Options:** J, Y, M  
**Playing Level:** Club/School

### FEATURES

- Dynamic diving catches, skilful legside stumpings, the Gray Nicolls wicket keeping glove range provides you with the opportunity to create your own match winning moments.
- Traditional durable rubber grip design
  - Cotton palm and cuff lining
  - Strategically positioned mesh panels allow airflow and ventilation
  - Classic rubber thimbles with diffuser foam



# WICKET KEEPING



## TEST WK PADS

**Size Options:** M, L

**Playing Level:** Test

### Features

- Ultra lightweight keeping pad, ergonomically designed for superior fit
- 100% Lightweight High Density EVA provide great impact resistance at a fraction of the weight.
- High Arch design for improved fit and mobility.
- Padded 2 inch straps for extra comfort,



## 5 STAR WK PADS

**Size Options:** Y, M, L

**Playing Level:** Test

### Features

- Utilising same design as the Test pad with more traditional padding methods.
- Combination of cane and EVA provide excellent impact resistance.
- Moisture management lycra bolsters, 2inch straps and a high arch for outstanding fit.



## ACADEMY WK PADS

**Size Options:** Y, M

**Playing Level:** Test

### Features

- Traditional keeping pad with 7 vertical cane rods with High density foam front for premium look.
- EVA top hat ergonomically designed to fit the shape of the leg and ensure the vulnerable knee is covered.

**Available as Junior option**

- Junior pad has 7 vertical cane rods combined with raw cotton fill to withstand hard impacts.

Sizes: J / Y



## INNER COTTON PLAIN PALM

**Size Options:** J, Y, M

### Features:

- Premium soft cotton on backhand, with soft cotton palm.
- Mesh vented fingers, and elastic wrist strap for secure fit.



## INNER COTTON PADDED PALM

**Size Options:** B, Y, M

### Features:

- Premium soft cotton on backhand, with padded durable cotton palm.
- Mesh vented fingers, and elastic wrist strap for secure fit.



# BODY ARMOUR



## ALL-IN-ONE 360 THIGH PAD

**Size Options:** J, Y, M  
**Playing Level:** League

- Club level body armour incorporating thigh, and inner thigh padding
- Designed to allow maximum range of movement throughout any shot.
- Lycra covering gives excellent stretch to fit a wide range of body shapes



## 5 STAR THIGH GUARD

**Size Options:** M  
**Playing Level:** Club

- Entry level thigh pad
- Ambidextrous design
- Plain foam finishing



## WARRIOR GUARD

**Size Options:** M  
**Playing Level:** Entry Level

- A great entry level pad for the beginner or casual player.



## ACADEMY THIGH PAD

**Size Options:** B, Y, M

- Entry level thigh pad.
- Ambidextrous design.
- Plain foam finishing.



## TEST INNER THIGH PAD

**Size Options:** M



## VELOCITY ARM GUARD

**Size Options:** Y, M



## WARRIOR ARM GUARD

**Size Options:** M



## GNX-250 ARM GUARD

**Size Options:** M



## PRO PERFORMANCE ABDO GUARD

**Size Options:** Y, M



## STANDARD ABDO GUARD

**Size Options:** J, Y, M

# HELMETS

TAKE ON THE FASTEST BOWLERS SAFE IN THE KNOWLEDGE OUR HELMET COLLECTION HAS PERFORMED WITH HUGE SUCCESS. OUR INTERNATIONALS TRUST GRAY-NICOLLS. MAKE YOUR CHOICE AND TAKE ON THE CHALLENGE WITH CONFIDENCE.

GRAY-NICOLLS EMPOWERS...



## TEST OPENER HELMET

**Size Options:** M, L, XL  
**Colour Options:** Green, Navy,

### Features:

- Factory-fitted Apex grille with lateral armour.
- Integrated shock absorbers between helmet and grille.
- Interflow vent channels moulded into the helmet lining.
- New internal strap for comfort and the perfect fit.



## FULLY CERTIFIED

All Helmets in the Gray-Nicolls range are fully certified to the updated (2013) British Standard and the Australian Standard, for cricket helmets.



## NECKGUARD

**Size Options:** S/M, L/XL

### Features:

- High-impact ABS construction with shock dampening foam lining.
- Provides additional coverage around the sides and back of neck.
- Suitable for all Gray-Nicolls Helmets.



## ATOMIC HELMET

**Size Options:** S/M, L/XL  
**Colour Options:** Navy, Green

### Features:

- Traditional helmet with reinforced peak.
- Factory fitted Atomic grille.
- Internal Size Adjustment (ISA) system.



## FULLY CERTIFIED

All Helmets in the Gray-Nicolls range are fully certified to the updated (2013) British Standard and the Australian Standard, for cricket helmets.



# LUGGAGE

TRAVEL IN STYLE IN THE KNOWLEDGE YOUR KIT IS SAFE AND SOUND. DESIGNED BY CRICKETERS FOR CRICKETERS WITH FUNCTIONALITY, THE KEY FEATURE IN OUR FANTASTIC NEW COLLECTION.



## PREDATOR 3 1500 (WHEELIE)

**Size:** 96 x 40 x 42 cm

**Colours:** Red / Black / Grey

**Number of Pockets:** 8

Impressive size wheelie bag with split top lid design to optimum storage areas.

### Features:

- Stand Up design with built in bat compartment suitable for 3 bats.
- Multi Pocket design with key pockets padded – two large main sections plus shoe, helmet, two bat & valuables pockets.
- Premium quality wheelie bag with full length runners and deluxe wheels
- Split lid design for maximum storage capacity

**KOACHSAK**



## KOACHSAK

**Size** - 90cm x 48cm x 42 cm

### Features:

Ideal for the club or school.

- Rear compartment for Stumps, full size cricket bats or Hockey Stick, Sidearms.
- Front compartment for Katchets, KatchMax, Skyers, Sidearms, Balls, ancillary items. Front compartment for Katchets, KatchMax, Skyers, Sidearms, Balls, ancillary items.
- Zipped divider to combine both main compartments if desired.
- Velcro divider to alter configuration of front compartment.
- Separate BallSak included to fit 20-24 balls
- Large front zipped pocket



## PRO VELOCITY XP1 1000 LUGGAGE

**Size:** 100 x 38 x 38 cm

**Colours:** Grey / Silver / Volt

**Number of Pockets:** 5

A large but practical bag designed for the modern day cricketer – large main storage area supplemented with functional smaller pockets for all key items.

### Features:

- Ergonomic design allows for both traditional and stand upright use.
- Large main storage compartment to fit bat, pads, gloves and all large items of kit.
- Separate end shoe pocket.
- 3 Ergonomically designed side pockets for multi purpose storage of kit and equipment.
- Premium quality wheelie system and innovative strap design for easy transportation.





## KOACHSAK DUFFLE

**Size:** H77 x W47 X D25cm - Volume 95 litres

Building on the successful 'Sak' concept which focused on the specific needs and equipment used by the modern Cricket & Hockey coach the duffle offers many of the benefits of the KoachSak, in a more compact and easily carried size making it ideal for those training sessions not requiring the kitchen sink!

### Features:

- One large compartment with one moveable velcro divider.
- Rucksack handles same as the KoachSak but rather more important on the duffle as there are no wheels on this model!
- Reinforced Base on the exterior of the base and bottom 4 inches our duffle has a wear resistant and waterproof cover.
- Padded walls your duffle is made from high quality nylon and is foam padded to protect your equipment from bashes and bumps.
- Velcro Interior we include our trademark velcro lining, so you can not only configure your divider as you please but also add our bat / stump/Sidearm tubes as you wish (These are sold separately).



## PREDATOR 3 PRO DUFFLE BAG

**Size:** 38 x 40 x 89 cm

**Colours:** Red / Black / Grey

**Number of Pockets:** 7

High performance duffle bag in the Predator3 Series – multi pocket design for the player who likes to know where everything is stored.

### Features:

- Stand Up design with hard structured lower section for stable base
- Separate bat compartment for storage of up to 3 bats – padded back for comfort when carrying and protection of bats.
- Streamlined design for easy carry and maximum capacity
- Additional storage space in lid section, plus shoe and pad sections.
- 3 additional pockets.



## VELOCITY XP1 900 WHEELIE BAG

**Size:** 100 x 35 x 30cm

**Colours:** Green / Black

Traditional cricket wheel bag

### Features:

- Large main compartment with top lid for easy access plus concealed padded bat compartment holds three bats
- Two external pockets ideal for storing personal items including one ICE thermo-insulated pocket for food and drink storage
- Superior heavy duty fabric for durability plus internal frame to aid shape retention
- Tractor-style wheels enable easy transportation plus two-rail base construction for structural support





## PREDATOR 3 800 WHEELIE BAG

**Size:** 85 x 35 x 30cm

**Colours:** Red / Black / Grey

Traditional cricket wheel bag

**Features:**

- Large main compartment with top lid for easy access
- External ICE thermo-insulated pocket for food and drink storage
- Large-profile tractor-style wheels enable easy transportation plus two-rail base construction for structural support



## PREDATOR 3 500 WHEELIE BAG

**Size:** 72 x 30 x 30cm

**Colours:** Red / Black / Grey

Traditional junior cricket wheel bag

**Features:**

- Large main compartment with top lid for easy access
- Large-profile tractor-style wheels enable easy transportation plus two-rail base construction for structural support



## VELOCITY XP1 STRIKE WHEELIE BAG

**Size:** 72 x 30 x 30cm

**Colours:** Green / Black

Traditional junior cricket bag

**Features:**

- Large main compartment with top lid for easy access plus external bat pocket

# CRICKET BALLS

## PLATYPUS BALLS



### PLATYPUS SPECIALTURF

- Three layered 4 piece ball made from A1 butt leather
- Linen Thread
- 3 Layer Cork/Wool Core
- Rubber Centre
- Colour: Red



### PLATYPUS TEST

- One layered 4 piece ball made from A1 butt leather
- Linen Thread
- 1 Layer Cork/Wool Core
- Rubber Centre
- Colour: Red



### CLUB SPECIAL TEST

- 2 piece game ball suitable for lower grades and age divisions with a cork/rubber core and wound wool outer
- Ideal for Lower/Junior Grades
- Cork/Rubber/Wool Core
- Linen Thread Stitching
- Colour: Red 156g & 135g

## HIGH SCHOOL MATCH AND PRACTICE 156G 4 PIECE



### INTERNATIONAL

- Grade A
- Four Piece Ball
- 3 layer centre (> 50 overs)



### ROYAL CROWN

- Grade A
- 4 Piece Ball
- Red (50 overs)
- White (50 overs)

## HIGH SCHOOL MATCH AND PRACTICE 156G 2 PIECE



### ROYAL CROWN

- Grade A
- 2 Piece Ball
- Red (50 overs)
- White (50 overs)



### DEMON

- Grade A
- 2 Piece Ball
- Red (40 overs)



### SHIELD

- Pakistan made leather ball ideal for practise and lower grades
- Red (30 overs)

## PRIMARY SCHOOL MATCH AND PRACTICE 135G AND 113G 2 PIECE



### ROYAL CROWN

- 2 Piece Ball
- Red (50 overs)



### DEMON

- Grade A
- 2 Piece Ball
- Red (40 overs)



### SHIELD

- Pakistan made leather ball ideal for practise and lower grades
- Red (30 overs)

## PRACTICE AND COACHING BALLS

### BOWLING MACHINE BALL

- PVC moulded ball
- Colour: Yellow



### TENNIS BALL

- Ideal for training with a shadow bat and for catching practise





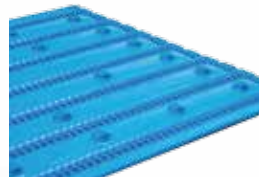
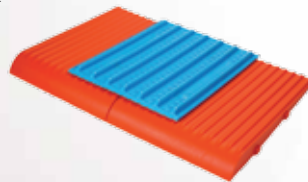
## RAWLINGS RENEGADE BASEBALL MITT

- Assists with fielding drills.
- Available in right or left handed.
- Ideal for coaches.



## RAWLINGS CATCHERS BASEBALL MITT

- Equipped with a full-grain leather shell for durability and shape retention, the Renegade gloves feature a deep flexible pocket for baseball or softball use, Velcro straps for a customizable fit and palm pads for added impact protection.



## KATCHET MAXI

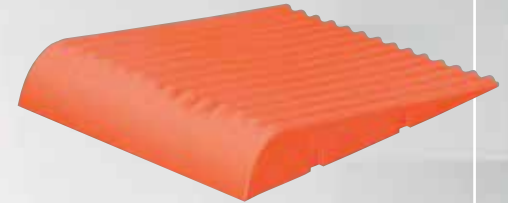
- The KatchMax sits on top of your Katchet, meshing with its grooves, and providing a slim line product for additional options and experiences to help all cricketers have fun and improve their skills in more varied and match specific ways.
- The KatchMax provides another level of deflection - more extreme than the Katchet - to help practice your foot movement and those spectacular diving catches and saves.
- As well as being lighter weight and space saving, it provides a coach with the option of placing the KatchMax flat on the ground for ground fielding, inner circle practice.

Note: This is for a Katchet Maxi only  
- Katchet not included and sold separately.

## KATCHET RAMP™

The original and best catching device, used by some of the best cricket players and coaches in the world.

- Katchet is practical, portable and offers a constant challenge to cricketers of all ages and abilities.
- Suitable for use with soft or hard ball, Katchet will provide situation specific training for all fielding positions.
- Katchet mirrors random deflections encountered when the ball deviates after hitting the bat or wicket.
- From school playing field to test arena, Katchet improves catching ability, technique, reflexes and fielding enjoyment.
- Katchet has been designed to deflect the ball in an unpredictable yet realistic fashion.
- Katchet uses a weather proof, impact resistant polypropylene surface which provides outstanding speed transference and durability.
- The textured surface and precisely engineered angle of Katchet enables the thrower to produce bounce and pace for the catcher with minimum effort.
- Katchet is a valued practice tool for International Cricket teams around the world.



## GRAY-NICOLLS BALL STOP NET

- Ball stop nets are ideal for fielding Flexi-Stump drills.
- Self-assembly with ground pegs
- Easy to put up and includes carry-case.
- **SOLD AS SET OF 2**



## CLOUD CATCHER LITE

- **NEW FOR 2017!**
- **FEATURES -**
- Designed to improve ball speed with minimal effort.
- Reduced blade length and longer handle increase bat speed.
- X-Lite High Density Foam enables coaches to hit the ball higher and further than ever before.
- New lightweight design reduces fatigue.



## SIDEARM™ PRO

Requires a slightly stronger throwing arm to use than the club, but once mastered can produce deliveries that can test and challenge the very best of batters. As used by today's leading coaches, the PRO can provide a level of quality practice that is impossible to better. A coach can provide 80mph swinging, seaming deliveries to simulate realistic match situations and scenarios in a practice environment.



## SIDEARM™ CLUB

Designed to provide the best practice available. It's very easy to use and a great way for coaches to create top quality practice at the introductory level of the game. The Sidearm™ Club has been de-signed to throw indoor practice balls, as well as full weight cricket balls.





# ACCESSORIES

## TECHNIQUE BAT

- A must have in all of Gray-Nicolls professional players kit bags.
- A blade width of 60mm designed to focus the batsman's practice and encourage hitting the middle of bat.
- Ideal to be used in any scenario.
- Made from the finest English Willow to ensure realistic performance and rebound.
- Great combined with mini tennis ball drills.

Sizes: SH, H, 6 or 5



## FUSION MULTI-STUMP

Designed by FUSION SPORTS The Multi-Stump is exceptionally durable and flexible. The MULTI-STUMP allows the ball to travel through the stump with minimal deflection, a big advantage over a standard stump making it far safer to use.

Can also be used as a catching training aid. By passing a ball through the MULTI-STUMP it takes a small secondary deflection through to waiting keeper and slip. This is ideal for keepers wishing to practice up to the stumps, but equally as useful for standing back practice. Can also be used as a bat for nicking practice up to the stumps.



Base sold separately.

Stumps sold individually as yellow or orange, spike included.

**FUSION MULTI-STUMP**

Image for illustration purposes only

## SKILLS BOWLING TARGET

- Assists with bowling skills
- Foldable and portable

Sizes: One Size Only



## POP UP FIELDER NET

- Ball stop nets are ideal for fielding Flexi-Stump drills.
- Self-assembly with ground pegs
- Easy to put up and includes carry-case.
- **SOLD AS SINGLE**



## SKILL FIELDING TARGET

- Foldable and portable
- Develops hand eye coordination
- Assists with fielding skills

Sizes: One Size Only



## TARGET STUMPS

- Single plastic stump with a spike base.
- Ideal for fielding or bowling training.
- Available in 28" or 14"





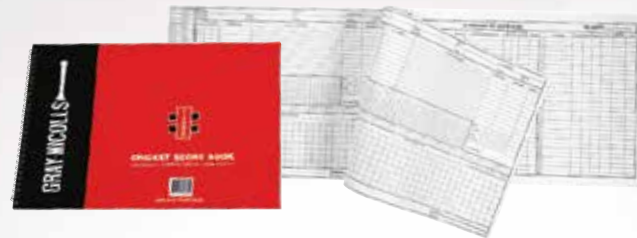
# SCORERS & UMPIRES



## PORTABLE SCOREBOARD

Ideal for the club or school.

- Strong manageable carry case.
- Size – L 122 x D 40cm.



## SCORE BOOK

60 Innings.



## UMPIRES COUNTERS

Umpires counting aid.



## BOWLERS MARKERS

Sold as a pair.

# STUMPS



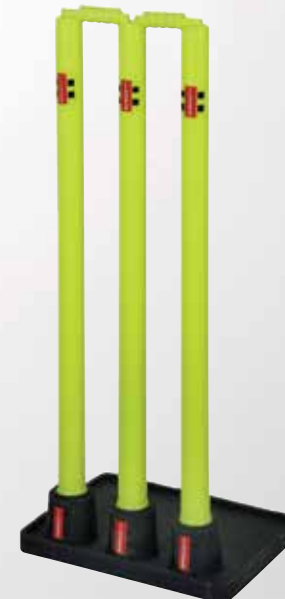
## ASH STUMPS

- Made from English Ash for top level matches
- Available in 28".
- Set of 6 stumps & bails included.



## SPRING RETURN STUMPS

- Spring loaded stumps.
- Easily portable.
- Set of 3 stumps and bails included.



## RUBBER BASED STUMPS

- Three plastic stumps on solid rubber base.
- Ideal for match or net training.

# STUMPS



## NEON STUMPS

- Ideal for T20 cricket.
- Available in 28" only.
- Set of 6 stumps and bails included.



## CLUB STUMPS

- Ideal for club and school use.
- Available in 27" and 28".
- Set of 6 stumps & bails included.



## METAL PLAYGROUND STUMPS

- Made from durable steel with impact resistant white coating.
- Easy to carry / reposition on steel base
- Available in 28" only.
- Set of 3 stumps and permanent bails.

# PROMOTIONAL ITEMS



## NEON BAILS

- Available in mens and youths width settings.



## BAILS

- Available in senior & junior sizes



## MINI BALL



## MINI BAT

- Autograph bats Ideal for special occasions.

A HIGH PERFORMANCE SHOE PACKED FULL OF TECHNICAL FEATURES DESIGNED TO DELIVER THE ULTIMATE PERFORMANCE FOR ALL ASPECTS OF THE GAME.

# VELOCITY XP1



## VELOCITY XP1 SHOE

Size Options: UK 7-11

## VELOCITY XP1 SPIKE SOLE



### Upper:

- Micro Pro Upper: Lightweight, breathable microfiber upper with breathable perforations designed to fit like a second skin.
- POWERBAND BRACE PRO: Brace system, which wraps around the midsection of the foot providing lateral support for explosive movements.

### Internal:

- Impact Protection System PRO (I.P.S.): Smart impact-absorbing layer of foam, which absorbs impact energy - Breathable, antimicrobial and lightweight.
- PROLAST +: New and improved fit with lower profile for a more comfortable streamlined but dynamic performance shoe.
- XRX FOAM FOOTBED: Advanced open cell high impact foam footbed to maximise energy transfer and cushioning through foot strike.

### Outsole:

- SPEEDBASE TPU OUTSOLE: New injected TPU outsole is lighter thinner and stronger. The SPEEDBASE technology creates a lightweight & stable functional base for explosive movements required at top level cricket.
- Supplied with spikes and soft spikes.
- SPEEDBASE TPU BATTING - New injected TPU outsole is lighter thinner and stronger. TPU cleat system provides optimum traction without the need for spikes.



# GN ATOMIC

A LIGHTWEIGHT ENTRY-LEVEL SHOE DESIGNED TO MEET THE NEEDS OF CLUB CRICKETERS.



GN ATOMIC  
RUBBER SOLE

## GN ATOMIC SHOE

### Size Options:

Velocity Xp1 Spike	UK 7-11
Atomic Spike (Senior)	UK 6 -12
Atomic Spike (Junior)	UK 3 - 5
Atomic Rubber (Senior)	UK 6 -12
Atomic Rubber (Junior)	UK 3 - 5

### Upper:

- High grade PU upper
- Powerbrace support elements: Overlays create midfoot stability easing stress on the foot during long days in the field.

## GN ATOMIC SPIKE SOLE

### Internal:

- A sleek lightweight running shoe profile.

### Outsole:

#### Spike:

- Blown rubber provides lightweight comfort.
- 9 strategically placed spikes for outstanding traction.
- ESS torsion midfoot section provides stability.

#### Rubber:

- Performance rubber sole unit.
- Suitable for indoor and outdoor use.
- Lightweight option.

## REPLACEMENT SPIKES

### Features:

- Replacement spikes that will fit any Gray-Nicolls shoe.
- Rubber Spikes: Available in packs of 20/100
- Steel Spikes: Available in packs of 20/100
- TestFlex Spikes: Available in packs of 20





## PLAYERS SHIRT

Composition 90% Polyester, 10% Elastane.

- Cricket specific fit engineered to move naturally with the body during sport for greater comfort.
- Key heat and ventilation zones to assist the with temperature regulation regardless of the conditions.
- Moisture controlling materials and ventilation channels allow air to flow close to the skin and draw heat away from the body.

Colour: White or Cream

Available in Short Sleeve & Long Sleeve

Sizes: 2XS - 5XL



## PLAYERS TROUSERS

Composition: 100% Polyester Mini Birdseye

- Moisture controlling materials allow air to flow from the body.
- Shaped panels contour the body for a great fit
- T-Shirt with classic crew neck for comfort.

Colour: White or Cream

Sizes: 2XS - 5XL



## SUN HAT

- Stylish wide brim
- 100% heavy-duty cotton
- Naturally stays in shape

Colours: Cream or Navy

Sizes: S, M, L, XL



## CRICKET SOCKS

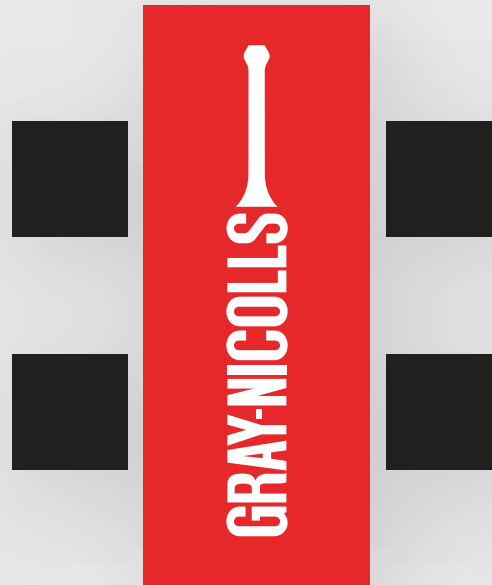
Composition: 86% Cotton, 11% Polyamide, 3% Elastane

- Fully cushioned sock for added comfort.
- Elasticated ankle support prevents sock movement.
- Turned welt for a more comfortable fit

Colour: White / Grey

Sizes: Medium 6 - 8½,

Large 9 - 12



WHERE TRADITION MEETS INNOVATION